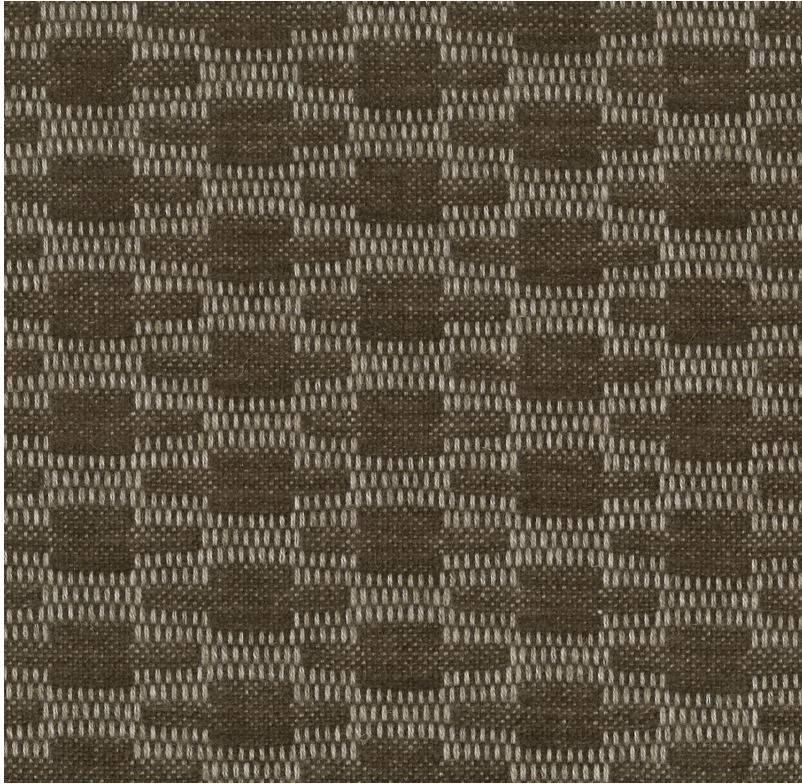
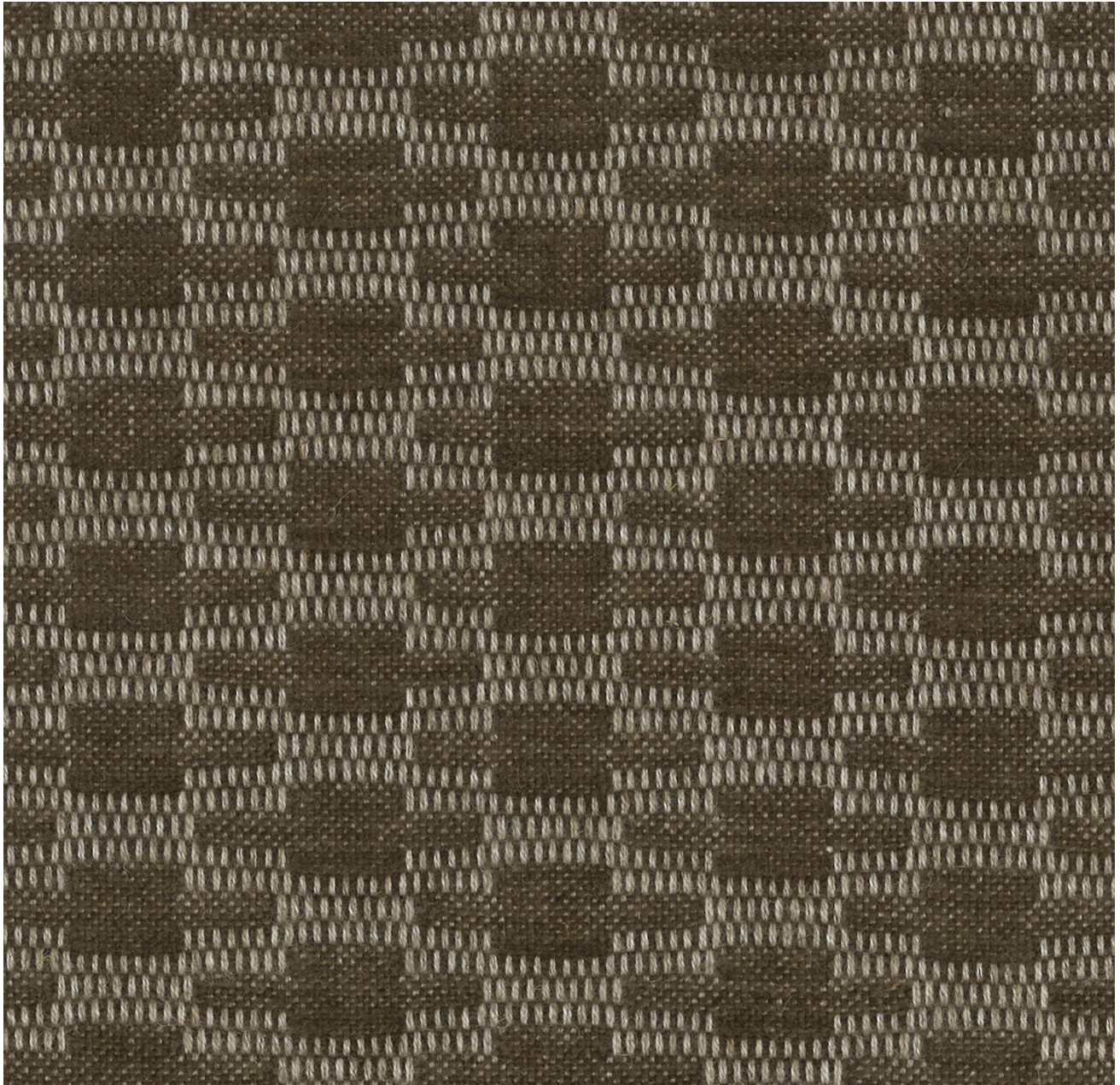


TIREE
1474-4 BROWN



A geometric weave featuring a small-scale, stitch-effect trellis pattern. The design combines a linen blend warp with a fine soft, cotton chenille weft yarn and has a beautiful soft handle.

Brand:	Marvic Textiles
Composition:	52% Cotton, 19% Linen, 19% Polyester, 10% Viscose
Fabric Repeat:	3cm / 1.25"
Width:	140cm / 55.25"
Rubs:	50,000 (Severe Contract)
Aftercare:	🧺 🌞
Usages:	Curtain Fabrics, Upholstery Fabrics, Performance Fabrics
Collections:	Alba Textures



MARVIC™

Showroom G26
Design Centre Chelsea Harbour
London SW10 0XE, UK
+44 (0)20 7352 3119
sales@marvictextiles.co.uk